

## The Prevalence of Human Intestinal Fluke Infections, *Haplorchis taichui*, in Thiarid Snails and Cyprinid Fish in Bo Kluea District and Pua District, Nan Province, Thailand

Dusit Boonmekam<sup>1</sup>, Suluck Namchote<sup>1</sup>, Worayuth Nak-ai<sup>2</sup>, Matthias Glaubrecht<sup>3</sup> and Duangduen Krailas<sup>1\*</sup>

<sup>1</sup>*Parasitology and Medical Malacology Research Unit, Department of Biology, Faculty of Science, Silpakorn University, Nakhon Pathom, Thailand*

<sup>2</sup>*Bureau of General Communicable Diseases, Department of Disease Control, Ministry of Public Health, Thailand*

<sup>3</sup>*Center of Natural History, University of Hamburg, Martin/Luther-King-Platz 3, 20146 Hamburg, Germany*

*\*Correspondence author. Email address: kduang@gmail.com*

Received December 19, 2015; Accepted May 4, 2016

### Abstract

Traditionally, people in the Nan Province of Thailand eat raw fish, exposing them to a high risk of getting infected by fish-borne trematodes. The monitoring of helminthiasis among those people showed a high rate of infections by the intestinal fluke *Haplorchis taichui*, suggesting that also an epidemiologic study (of the epidemiology) of the intermediate hosts of this flat worm would be useful. In this study freshwater gastropods of thiarids and cyprinid fish (possible intermediate hosts) were collected around Bo Kluea and Pua District from April 2012 to January 2013. Both snails and fish were identified by morphology and their infections were examined by cercarial shedding and compressing. Cercariae and metacercariae of *H. taichui* were identified by morphology using 0.5 % neutral red staining. In addition a polymerase chain reaction of the internal transcribed spacer gene (ITS) was applied to the same samples. Among the three thiarid species present were *Melanoides tuberculata*, *Mieniplotia* (= *Thiara* or *Plotia*) *scabra* and *Tarebia granifera* only the latter species was infected with cercariae, with an infection rate or prevalence of infection of 6.61 % (115/1,740). In the 10 species of cyprinid fish (viz. *Barbodes schwanenfeldi*, *Garra cambodgiensis*, *Hypsibarbus salweenensis*, *Mystacoleucus marginatus*, *Osparus pulchellus*, *Poropuntius deauratus*, *P. normani*, *Scaphiodonichthys acanthopterus*, *Systemus orphoides* and *S. stoltzkaenus*), metacercariae were found in all of them. Interestingly, *B. schwanenfeldi*, *M. marginatus*, *P. deauratus*, *P. normani* and *S. orphoides* had very high infection rates. Both morphometric and molecular identification confirmed those cercariae and metacercariae to represent the heterophyid *Haplorchis taichui*. Therefore, this study showed the high prevalence of this parasite both in its intermediate hosts as well as in humans. In order to prevent human infections, *H. taichui* has to be controlled.

**Keywords:** Fish-borne trematode; *Haplorchis taichui*; Intermediate host, Prevalence of infection

### Introduction

Haplorchiasis is the major public health of Southeast Asia (Chai et al., 2005; WHO, 1995). It is caused by the minute intestinal fluke, *Haplorchis taichui* Nishigori, 1924. *H. taichui* was found in Thailand, Lao PDR,

Vietnam and Philippines (Waikagul et al., 2002; De et al., 2003; Belizario et al., 2004; Sohn et al., 2014). Both human and fish-eating animals serve as the definitive hosts of *H. taichui* (Le et al., 2006). The adultworm live in the intestine of the host and produce eggs. The eggs pass

through the water and are ingested by freshwater snails (of the family Thiaridae) and then develop into miracidia, sporocysts, rediae and finally cercariae. The cercariae could swim and penetrate cyprinid fish and subsequently develop to their infective stage; the metacercariae. Humans can get infection by consumption of raw or improperly cooked cyprinid fish containing metacercariae (Kumchoo et al., 2005).

The situation of haplorchiasis might be underestimated. Because the eggs of *Haplorchis* sp. hardly differentiates from the liver fluke egg, *Opisthorchis viverrini*. *H. taichui* had a complex life cycle as same as that of *O. viverrini* but different in species of the first intermediate host. There was a report that 63.11% of people in the north of Thailand were affected with haplorchiasis (Radomyos et al., 1998). In Chaloeprakiat District of Nan Province, *H. taichui* was found in school children and villagers during 2002-2004 (Waikagul et al., 2008). In Bo Kluea District of Nan Province, the infection rate of humans with *H. taichui* was ranging from 2.4 – 27.59 % (Wijit et al., 2009). The first diagnosis under light microscope was identified as *O. viverrini*. But in a later study with the Kato Katz technique, adult patients were found to be infected with *H. taichui*. Thus, Thai Princess Sirindhorn Debaratanasuda created the project to reduce the infection in Bo Kluea District. Because of traditional dishes in North and Northeast Thailand (e.g. lab pla), were made from raw cyprinid fish. So, these people risked to get infection in everyday life (Sukontason et al., 1999). In some cases, patients complained of abdominal pain, and diarrhea (Watthanakulpanich et al., 2010).

The prevalence of *H. taichui* in the intermediate hosts both thiarid snail and cyprinid fish were reported in many studies. Those studies showed that the larvae of *H. taichui* were distributed in many area of Thailand particularly in the north of Thailand.

In the past, the trematode samples were identified based on the morphology. Almost the decade, the molecular identifications of this species of trematodes were developed in many studies (Chuboon et al., 2009; Chontanarith and Wongsawad, 2010; Chontanarith et al., 2014). Both nuclear genes and mitochondrial genes were used to design the specific primers.

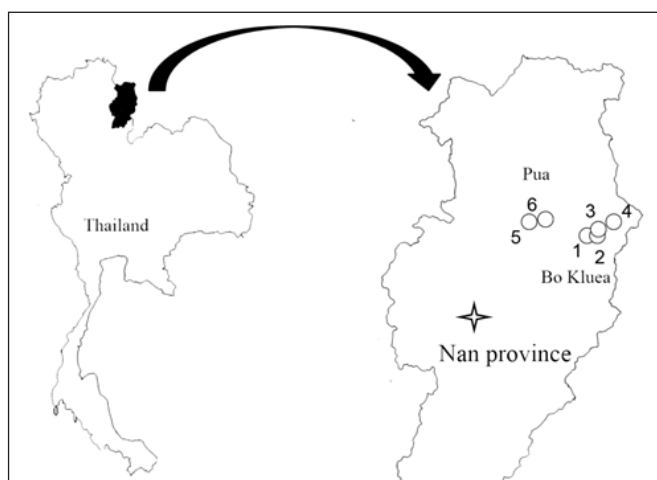
The internal transcribed spacer genes I and II were used to discriminate between trematode families Heterophyidae and Opisthorchiidae (Sato et al., 2009).

According to the previous study of *H. taichui* in humans, the prevalence of *H. taichui* in the intermediate hosts (both the first and the second intermediate hosts) were investigated in this study. The morphometric and molecular identification were applied to identify the obtained trematode larvae to confirm the prevalence of *H. taichui* infections in Bo Kluea and Pua District, Nan Province, Thailand.

## Materials and Methods

### Snail collection and examination of cercarial infections

In this study the counts per unit of time method was performed for snail collections (Olivier and Schneiderman, 1956). Thiarid snails were collected from 4 localities in Bo Kluea District (Mang River 1: E 101° 09' 6.1" N 19° 7' 44.1", Mang River 2: E 101° 09' 12.6" N 19° 7' 55.6". Mang River 3: E 101° 09' 21.4" N 19° 8' 48.0", Waa River: E 101° 12' 13.2" N 19° 11' 30.4") and 2 localities in Pua District (Khwang Stream: E 100° 56' 0.1" N 19° 10' 29.8", Fay Chao: E 100° 57' 45.4" N 19° 10' 42.8"), during April 2012 to January 2013 (Figure 1).



**Figure 1** Map showed the collected locations in Bo Kluea and Pua Districts, Nan province, Thailand. (modified from [www.thai.wikipedia.org](http://www.thai.wikipedia.org)) (see detail in materials and methods)

All snail samples were identified based on their shell morphologies according to Brandt's criteria (Brandt, 1974) and investigated the trematode infections by shedding and crushing methods (Krailas et al., 2003). Each snail was isolated in a plastic container with dechlorinated tap-water. Cercariae were collected from the water and rediae were investigated from snail's tissues. The cercariae and rediae were stained with 0.5% neutral red and studied the morphologies under the light microscope. The individual metacercaria was drawn with a *camera lucida*. The cercariae were preserved in 95% ethanol for DNA analysis.

#### **Fish collection and metacercarial morphology**

Cyprinid fish were collected by local tool (Hoom) during April 2012 to January 2013 from 2 localities, Mang River 3 and Khwang Stream. The investigation of metacercarial infections was done by compression method. The collected fish were identified based on their morphologies according to Vidthayanon's criteria (Vidthayanon, 2005) and examined for trematode infections using the compression method. The metacercariae were identified based on their encysted and excysted morphologies. The numbers of metacercariae of each species were measured and recorded their sizes. The excysted metacercariae were stained with 0.5% neutral red and study the morphology. The individual metacercaria was drawn with a *camera lucida*. The metacercariae were preserved in 95% ethanol for DNA analysis.

#### **Molecular identification**

Genomic DNA from the cercariae and metacercariae were extracted using the DNeasy blood and animal tissue kit (QIAGEN, Germany). PCR of the internal transcribed spacer II was performed with the following primers: ITS2 regions: ITS2-F: 5'-CTT GAACGC ACA TTG CGG CCA TGG G-3'

ITS2-R: 5'-GCG GGT AAT CACGTC TGA GCC GAG G-3'

The reactions were performed in 50- $\mu$ l volumes with final concentrations of 5 mM dNTPs, 1.5 mM MgCl<sub>2</sub>, 1.5 U Taq polymerase, and 1 mM of the primers. The DNA samples were initially denatured at 94°C for 4 min followed by 35 cycles that consisted of denaturation at

94°C for 1 min, annealing at 60°C for 30 s, and elongation at 72°C for 2 min following Sato (2009). Then, the PCR products were loaded onto 1% agarose gels for electrophoresis.

PCR products of ITS2 were purified and sequences by Bioservice unit, Thailand. The sequences were analysed by MEGA 5.0 program (Tamura et al., 2011). The phylogenetic tree was constructed by ClustalW for alignment and Neighbor Joining method with 1000 bootstraps. For the construction of the ITS2 phylogenetic tree, 6 sequences of *H. taichui* from this study, 3 sequences of *H. pumilio* were used. From the out group, one sequence of *O. felinius* (EF 688142) and 2 sequences of *O. viverrini* (AY 584735 and this study) were incorporated to the tree.

#### **Results**

##### **The infections of *Haplorchis taichui* in thiarid snails**

A total of 1,740 snails were collected. Based on shell morphology, there were three species of thiarid snails, *Melanoides tuberculata*, *Mieniplotia* (= *Thiara* or *Plotia*) *scabra* and *Tarebia granifera*. *T. granifera* was the dominant species and it was only susceptible to *H. taichui*, with infection rates being 7.98% (115/1,440). Five locations were found snail infections, they were Mang River 1, Mang River 2, Mang River 3, Waa River and Khwang Stream. The infection rates were 1.78%, 26.27%, 31.08%, 41.18% and 0.59%, respectively.

##### **Cercarial morphology**

The cercariae of *H. taichui* were oval shape with yellow. Eye spot and pharynx were present. There were seven pairs of penetration glands, typical character of *H. taichui*. The ducts of penetration glands opened at the end of anterior part of body. Excretory bladder was round. Tail was long with lateral finfold and dorso-ventral finfold. Flame cell was not observed (Figure 2).

##### **Measurement of cercariae**

Body: 32-58  $\mu$ m (av. 47  $\mu$ m)  $\times$  63-113  $\mu$ m (av. 86  $\mu$ m)

Oral sucker: 7-22  $\mu$ m (av. 14  $\mu$ m)  $\times$  10-20  $\mu$ m (av. 18  $\mu$ m)

Pharynx: 2.5-10  $\mu$ m (av. 5  $\mu$ m)  $\times$  5-13  $\mu$ m (av. 8  $\mu$ m)

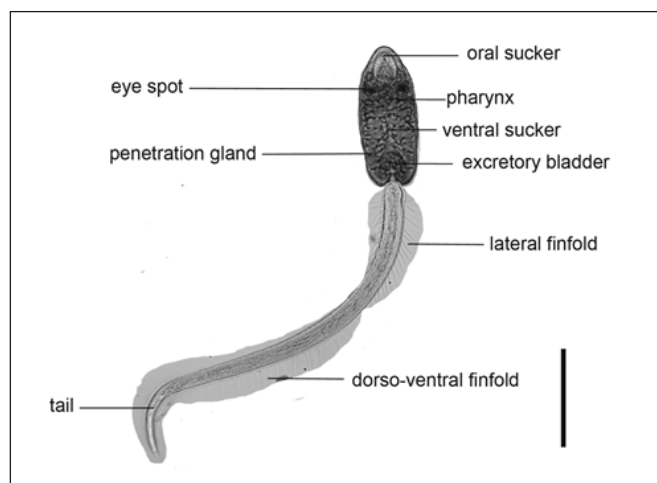
Ventral sucker: 10-18  $\mu$ m (av. 14  $\mu$ m)  $\times$  10-13  $\mu$ m (av. 12  $\mu$ m)

Excretory bladder: 15-25  $\mu\text{m}$  (av. 18  $\mu\text{m}$ )  $\times$  10-18  $\mu\text{m}$  (av. 15  $\mu\text{m}$ )

Tail: 10-23  $\mu\text{m}$  (av. 15  $\mu\text{m}$ )  $\times$  260-430  $\mu\text{m}$  (av. 328  $\mu\text{m}$ )

### The infections of *Haplorchis taichui* in cyprinid fish

A total of 10 species of cyprinid fish were collected, viz. *Barbodes schwanenfeldi*, *Garra cambodgiensis*, *Hypsibarbus salweenensis*, *Mystacoleucus marginatus*, *Osparus pulchellus*, *Poropuntius deauratus*, *Poropuntius normani*, *Scaphiodonichthys sacanthopterus*, *Systemus orphoides* and *Systemus stoltzkaenus*. The infections in fish were observed from both Mang River 3 and Khwang Stream. The seasonal infection rates were shown in Table 2.



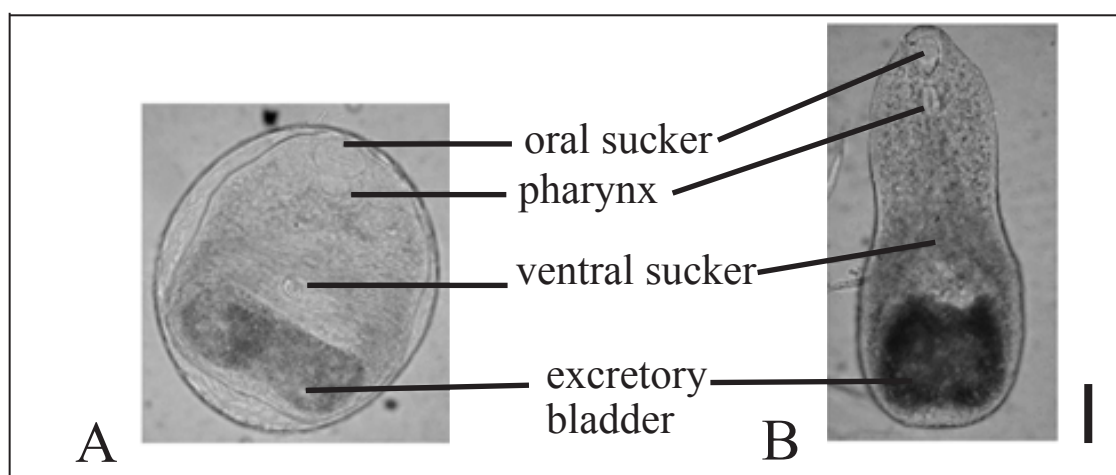
**Figure 2** Image of *Haplorchis taichui* cercaria, staining with 0.5% neutral red (scale bar = 100  $\mu\text{m}$ )

**Table 1** Infection status of *Haplorchis taichui* cercariae in freshwater snails of Family Thiariidae

Localities / Thiariids	April 2012 No. of collected snails (infected snails)	Jan 2013 No. of collected snails (infected snails)	Total No. of collected snails (infected snails)
<b>Mang River 1</b>			
<i>Tarebia granifera</i>	328	11 (4) = 36.36 %	339 (4) = 1.78 %
<i>Melanoides tuberculata</i>	68	5	73
<i>Mieniplotia scabra</i>	5	2	7
<b>Mang River 2</b>			
<i>Tarebia granifera</i>	35 (15) = 42.85 %	182 (42) = 23.08 %	217 (57) = 26.27 %
<i>Melanoides tuberculata</i>	10	72	82
<i>Mieniplotia scabra</i>	5	6	11
<b>Mang River 3</b>			
<i>Tarebia granifera</i>	109 (21) = 19.27 %	139 (25) = 20.86 %	148 (46) = 31.08 %
<i>Melanoides tuberculata</i>	93	11	104
<i>Mieniplotia scabra</i>	1	10	11
<b>Waa River</b>			
<i>Tarebia granifera</i>	5 (1) = 20 %	12 (4) = 33.33 %	17 (5) = 41.18 %
<i>Mieniplotia scabra</i>	1	0	1
<b>Khwang Stream</b>			
<i>Tarebia granifera</i>	443	62 (3) = 4.83 %	505 (3) = 0.59 %
<i>Melanoides tuberculata</i>	2	3	5
<i>Mieniplotia scabra</i>	4	0	4
<b>Fay Chao</b>			
<i>Tarebia granifera</i>	174	40	214
<i>Mieniplotia scabra</i>	0	2	2

**Table 2** Infection status with *Haplorchis taichui* metacercariae of freshwater fish Family Cyprinidae

Locality /Cyprinids	April 2012	January 2013	Total
	No. of collected fish	No. of collected fish	No. of collected fish
	(infected fish)	(infected fish)	(infected fish)
<b>Mang River 3</b>			
<i>Garra cambodgiensis</i>	24 (10) (41.67 %)	6 (2) (33.33%)	30 (12) (46.67%)
<i>Hypsibarbus salweenensis</i>	-	9 (6) (66.67%)	9 (6) (66.67%)
<i>Osparus puchellus</i>	35 (32) (91.42%)	3 (3) (100%)	38 (35) (92.41%)
<i>Poropuntius normani</i>	3 (3) (100%)	-	3 (3) (100%)
<i>Scaphiodonichthys acanthopterus</i>	8 (4) (50%)	9 (5) (55.55%)	17 (9) (52.94%)
<i>Systomus orphoides</i>	-	1 (1) (100%)	1 (1) (100%)
<i>Sytsomus stoltzkaenus</i>	-	32 (16) (50%)	32 (16) (50%)
<b>Khwang Stream</b>			
<i>Barbodes schwanefeldi</i>	1 (1) (100%)	3 (3) (100%)	4 (4) (100%)
<i>Mystacoleucu smarginatus</i>	15 (15) (100%)	2 (2) (100%)	17 (17) (100%)
<i>Poropuntius deauratus</i>	1 (1) (100%)	-	1 (1) (100%)

**Figure 3** Images of metacercaria of *Haplorchis taichui*, staining with 0.5% neutral red (scale bar = 50  $\mu$ m)

A: encysted metacercaria

B: excysted metacercaria



### Metacercarial morphology

Encysted metacercaria of *H. taichui* was round with 2 cyst walls. The inner cyst wall was thicker than outer cyst wall. Furthermore, the surface of larvae had minute spines. There were spines at oral sucker. Ventral sucker and pharynx were clearly observed. Gonotyl was present nearby ventral sucker. Esophagus was long. Only one testis was observed at the end of body. Ovary was above testis. Excretory bladder was big with black pigment (Figure 3).

#### Measurement of metacercaria

Encysted metacercaria: 180-280  $\mu\text{m}$  (av. 214.5  $\mu\text{m}$ )  
x 200-290  $\mu\text{m}$  (av. 231.6  $\mu\text{m}$ )

Body: 87.5-162.5  $\mu\text{m}$  (av. 142.9  $\mu\text{m}$ ) x 215-307.5  $\mu\text{m}$   
(av. 201.4  $\mu\text{m}$ )

Oral sucker: 40-57.5  $\mu\text{m}$  (av. 49.63  $\mu\text{m}$ ) x 32.5-45  $\mu\text{m}$   
(av. 40.13  $\mu\text{m}$ )

Ventral sucker: 27.5-50  $\mu\text{m}$  (av. 37.38  $\mu\text{m}$ ) x 27.5-50  $\mu\text{m}$   
(av. 37.38  $\mu\text{m}$ )

Pharynx: 17.5-30  $\mu\text{m}$  (av. 23.25  $\mu\text{m}$ ) x 25-42.5  $\mu\text{m}$   
(av. 33.88  $\mu\text{m}$ )

Esophagus: 60-115  $\mu\text{m}$  (av. 84.5  $\mu\text{m}$ )

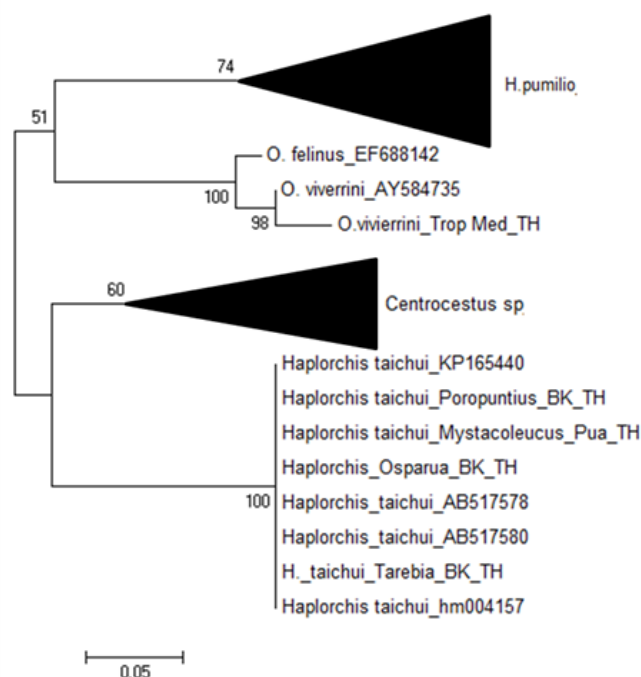
Excretory Bladder: 100-150  $\mu\text{m}$  (av. 128  $\mu\text{m}$ ) x 67.5-122.5  $\mu\text{m}$  (av. 85.88  $\mu\text{m}$ )

Testis: 37.5-62.5  $\mu\text{m}$  (av. 44.25  $\mu\text{m}$ ) x 37.5-50  $\mu\text{m}$  (av. 43.63  $\mu\text{m}$ )

Ovary: 22.5-35 (av. 28.88  $\mu\text{m}$ ) x 25-37.5  $\mu\text{m}$  (av. 28  $\mu\text{m}$ )

### Molecular identification

All samples had the PCR products of ITS2 gene with about 500 bp (data not shown). All of them were identified as *H. taichui*. Some sequences were aligned with *H. pumilio* and *Centrocestus formosanus* from Pasak Cholasid Dam (from Parasitology and Medical Malacology Research Unit, Silpakorn University) and adult of *O. viverrini* (TM) (kindly provided from Faculty of Tropical Medicine, Mahidol University). We also added the sequence of *H. taichui*, *O. viverrini* and *O. felinus* from GenBank. The result of phylogeny also showed that samples from Bo Kluea (BK) were *H. taichui* (Figure 4).



**Figure 4** Phylogenetic tree of partial internal transcribe spacer II (ITS2) of *Haplorchis taichui* from Bo Kluea District, Nan Province, Thailand comparing to *H. pumilio* and *Centrocestus sp.* from Pasak Cholasid reservoir of Thailand, adult of *O. viverrini* from Faculty of Tropical Medicine, Mahidol University and *O. felinus* from Gen Bank (the names containing the trematodes and their hosts)

### Discussion

The results showed that collected larval stages of trematodes from Bo Kluea District, Nan Province, Thailand were *Haplorchis taichui*. For morphological identification, neutral red was used to see the internal organ of cercariae and metacercariae. (Yamaguti, 1975). Moreover, we used the primer sets from Sato (2009) because they were designed for discrimination between *Opisthorchis viverrini*, *Clonorchis sinensis*, *H. taichui* and *H. pumilio*. and other heterophyids. However, the genetic variation of heterophyid trematode was observed (Dung et al., 2013). So, we sequenced some of them and made a phylogenetic tree. Due to the same size of sequences, *H. pumilio* and *O. viverrini* are sister groups in the tree.

Originally, *H. taichui* was assumed to be endemic to the north of Thailand (Boonchot et al., 2005; Namue et al., 1998). Patients suffering from haplorchiasis were reported in Chiang Mai, Lampang and the Nan Province of Thailand, particularly Bo Kluea District (Namue et al., 1998; Wijit et al., 2009). The larval stages of this parasite were also found in the first intermediate host Thiarid snails and the second intermediated host, cyprinid fish from Chiang Mai, North Thailand (Boonchot et al., 2005; Kumchoo et al., 2005; Sukontason et al., 2001), which both were very abundant in the Northern area of Thailand. Those intermediate hosts were available for human transmission. From other study, cercariae of *H. taichui* were also found in *Melanoides tuberculata* from Tansawan Waterfall, Phayao Province, North of Thailand (Krailas et al., 2014). In extending, *H. taichui* cercariae were found in both Bo Kluea and Pua District, Nan Province. *H. taichui* metacercariae was found in all of cyprinid fish from those areas. Our survey showed that cyprinid fish from Mang River which was very close to South Bo Kluea Villages, where people in these area were highly infected with this species of trematode (MOPH, 2009; Wijit et al., 2009).

It was well known that *H. taichui* had the thiarid snails as the first intermediate host. From the three species of thiarid in the area, only *Tarebia granifera* was found to be infected. We still did not understand how *T. granifera* had more susceptibility than the other snails in this area. From the south of Thailand, it seemed to be that *M. tuberculata* had the highest infection rate among thiarid snails (Krailas et al., 2011). Perhaps, *H. taichui* would infect the most abundant species of each area.

In Thailand, only *Mystacoleucus marginatus* and *Systomus orphoides* were reported that they could be the second intermediate host of *H. taichui* (Boonchot et al., 2005; Rim et al., 2008). And it was confirmed by the present study that 8 species of cyprinid fish, *Barbodes schwanenfeldi*, *Garra cambodgiensis*, *Hypsibarbus salweenensis*, *Osparus pulchellus*, *Poropuntius deauratus*, *Poropuntius normani*, *Scaphiodonichthys acanthopterus* and *Systomus stoliczkaenus* were recorded as more second intermediate host of *H. taichui* in the literature.

Fishborne trematodiasis was a serious public health in Asia and Southeast Asia (Macpherson et al., 2005).

Although the liver fluke, *Opisthorchis viverrini* might be a major cause of this illness, the minute intestinal fluke also posed a problem. Due to the misdiagnosis of stool examination, the prevalence of minute intestinal fluke might be underestimated (Kaewkes et al., 1991). Many studies showed that the minute intestinal flukes in the family Heterophyidae were recovery from human especially *Haplorchis taichui*. It was the most prevalent species in humans among the heterophyid trematodes (Chai et al., 2005). The present study has confirmed that *H. taichui* was prevalent in Bo Kluea and Pua Districts of Nan Province, Thailand. So, people in these areas should avoid eating the raw or undercooked cyprinid fish.

### Acknowledgements

This research was supported by Bureau of General Communicable Diseases, Department of Disease Control, Ministry of Public Health, Thailand. We also thank Department of Helminthology, Faculty of Tropical Medicine, Mahidol University and Department of Biology, and Faculty of Science, Silpakorn University. We would like to especially thank Dr. Matthias Vandichel for valuable suggestions and editing the manuscript. The financial support was received by the authors from the Thailand Research Fund (The Golden Jubilee Ph.D. Program PHD/0195/2551).

### References

- Belizario, V. Y. Jr., de Leon, W. U., Bersabe, M. M. J., Baird, J. K., and Bangs M. J. (2004) A Focus of Human Infection by *Haplorchi taichui* (Trematoda: Heterophyidae) in the Southern Philippines. *Journal of Parasitology* 90(5): 1165–1169.
- Boonchot, K. and Wongsawad, C. (2005) A survey of helminthes in cyprinid fish from the Mae Ngad Somboonchon Reservoir, Chiang Mai Province, Thailand. *Southeast Asian Journal of Tropical Medicine and Public Health* 36: 103-107.
- Brandt, R. A. M. (1974) The non-marine aquatic mollusca in Thailand: German, Walderman Kramer, pp. 19-234.
- Chai, J. Y., Murrell K. D., and Lymbery, A. J. (2005) Fish-borne parasitic zoonoses: status and issues. *International Journal of Parasitology* 35: 1233-1254.

- Chai, J. Y., Han, E. T., Shin, E. T., Sohn, W. M., Yong, T. S., Eom, K. S., Min, D. Y., Um, J. Y., Park, M. S., Hoang, E. H., Phommasack, B., Insisiengmay, B., Lee, S. H., and Rim, H. J. (2009) High prevalence of *Haplorchis taichui*, *Phaneropsolus molenkampi*, and other helminth infection among people in Khammouane province, Lao PDR. *Korean Journal of Parasitology* 47(3): 2433-2437.
- Chontanarith, T. and Wongsawad, C. (2010) Prevalence of *Haplorchis taichui* in Field-Collected Snails: A molecular Approach. *Korean Journal of Parasitology* 48(4): 343-346.
- Chontanarith, T., Wongsawad, C., Chomdej, S., Krailas, D. and Chai, J. (2014) Molecular phylogeny of trematodes in Family Heterophyidae based on mitochondrial cytochrome c oxidase subunit I (mCOI). *Asian Pacific Journal of Tropical Medicine* 7(6): 446-450.
- Chuboon, S. and Wongsawad, C. (2009) Molecular Identification of larval trematode in intermediate hosts from Chiang Mai, Thailand. *Southeast Asian Journal of Tropical Medicine and Public Health* 40(6): 1216-1220.
- De, N. V., Murrel, K. D., and Cong, D. (2003) The food-borne trematode zoonoses of Vietnam. *Southeast Asian Journal of Tropical Medicine and Public Health* 34 (suppl 1): 12-34.
- Dung, D. T., Hop N. T., Thaenkham, U., and Waikagul J. (2013) Genetic differences among Vietnamese *Haplorchis taichui* populations using the COI genetic marker. *Journal of Helminthology* 87(1): 66-70.
- Kaewkes, S., Elkins, D. B., Sithithaworn, P., and Haswell-Elkins, M. R. (1991) Comparative studies in the morphology of the eggs of *Opisthorchis viverrini* and Lecithodendriid Trematodes. *Southeast Asian Journal of Tropical Medicine and Public Health* 22: 623-630.
- Krailas, D., Namchote, S. and Rattanathai, P. (2011) Human intestinal flukes *Haplorchis taichui* and *Haplorchis pumilio* in their intermediate hosts, freshwater snails of the families Thiaridae and Pachychilidae, in southern Thailand. *Zoosystematics and Evolution* 87: 349-360.
- Krailas, D., Namchote, S., Koonchornboon, T., Dechruksa, W., and Boonmekam, D. (2014) Trematodes obtained from the thiarid freshwater snail *Melanoides tuberculata* (Müller, 1774) as vector of human infections in Thailand. *Zoosystematics and Evolution* 90(1): 57-86.
- Kumchoo, K., Wongsawad, C., Chai, J. Y., Vanittanakom, P., and Rojanapaibul, A., (2005) High prevalence of *Haplorchis taichui* metacercariae in Cyprinid fish from Chiang Mai Province, Thailand. *Southeast Asian Journal of Tropical Medicine and Public Health* 36(2): 451-455.
- Le, T. H., De, N. V., Blair, D., Sithithaworn, P., and McManus, D.D. (2006) *Clonorchis sinensis* and *Opisthorchis viverrini*: development of a mitochondrial based PCR for their identification and discrimination. *Experimental Parasitology* 112: 109-114.
- Macpherson, C. N. L. (2005) Human behavior and the epidemiology of parasitic zoonoses. *International Journal of Parasitology* 35: 1319-1331.
- Ministry of Public Health (MOPH). (2009) The annual report of helminthiasis control program among the students and youth at the remote area and the Phufa Phattana area under the royal Highness Maha Chakri. Department of Diseases Control, Ministry of Public Health, Bangkok, 143 pp. (in Thai).
- Namue, C., Rojanapaibul, A., and Wongsawad, C. (1998) Occurrence of two heterophyid Metacercariae *Haplorchis* and *Haplorchoides* in cyprinid fish in some Districts in Chiang Mai and Lamphun Provinces. *Southeast Asian Journal of Tropical Medicine and Public Health* 29: 401-405.
- Olivier, L. C. and Schneiderman, M. (1956) Method for estimating the density of aquatic snail population. *Experimental Parasitology* 5: 109-117.
- Radomyos, B., Wongsaroj, T. and Wilairatana, P. (1998) Opisthorchiasis and intestinal fluke infections in northern Thailand. *Southeast Asian Journal of Tropical Medicine and Public Health* 29: 123-7.
- Rim, H. J., Sohn, W. M., Yong, T. S., Eom, K. S., Chai, J. Y., Min, D. Y., Lee S. H., Hoang, E. H., Phommasack, B., and Insisiengmay, S. (2008) Fishborne Trematoda Metacercariae Detected in Freshwater Fish from Vientiane Municipality and Savannakhet Province, Lao PDR. *Korean Journal of Parasitology* 46: 253-



- 260.
- Sato, M., Thaenkham, U., Dekumyoy, P., and Waikagul, J. (2009) Discrimination of *O. viverrini*, *C. sinensis*, *H. pumilio* and *H. taichui* using nuclear DNA-based PCR targeting ribosomal DNA ITS regions. *Acta Tropica* 109: 81-83.
- Sohn, W. M., Yong, T. S., Eom, K. S., Min, D. Y., Lee, D., Jung, B.K., Banouvong, V., Insisiengmay, B., Phommasack, B., Rim, H.J., and Chai, J.Y. (2014) Prevalence of *Haplorchis taichui* among human and fish in Luang Prabang Province, Lao PDR. *Acta Tropica* 136: 74-80.
- Sukontason, K., Piangjai, S., Muangyimpom, Y., Sukontason, K., Methanitikorn, R., and Chaithong, U. (1999) Prevalence of the metacercariae in cyprinid fish of Ban Pao District, Chiang Mai Province, Northern Thailand. *Southeast Asian Journal of Tropical Medicine and Public Health* 30: 365-370.
- Sukontason, K. L., Sukontason, K., Boonsriwong, N., and Muangyimpom, Y. (2001) Intensity of the metacercariae in cyprinid fish in Chiang Mai Province, Northern Thailand. *Southeast Asian Journal of Tropical Medicine and Public Health* 32 (suppl 2): 214-217.
- Tamura, K., Peterson, D., Peterson, N., Stecher, G., Nei, M., and Kumar, S. (2011) MEGA5: *Molecular Evolutionary Genetics Analysis using Maximum Likelihood, Evolutionary Distance, and Maximum Parsimony Methods*. *Molecular Biology and Evolution* 28: 2731-2739.
- Thaenkham, U., Dekumyoy, P., Komalamisra, C., Sato, M., Dung, D. T. and Waikagul, J. (2010) Systematics of the subfamily Haplorchinae (Trematoda: Heterophyidae), based on nuclear Ribosomal DNA gene and ITS2 region. *Parasitology International* 59: 460-465.
- Vidthayanon, C. (2005) Freshwater fish in Thailand, Nanmee Book Publishing, Bangkok, 16 pp.
- Waikagul, J., Krudsood, S., and Radomyos, P. (2002) A cross-sectional study of intestinal parasitic infection among school children in Nan Province, Northern Thailand. *Southeast Asian Journal of Tropical Medicine and Public Health* 33: 218-223.
- Waikagul, J., Jongsuksantigul, P., Rattanawitoon, U., Radomyos, P., Kojima, S., and Takeuchi, T. (2008) Parasitological Monitoring of Helminth Control Program in Northern Thailand. *Southeast Asian Journal of Tropical Medicine and Public Health* 39 (6): 1008-1014.
- Wattanakulpanich, D., Waikagul, J., Maipanich, W., Nuamtanong, S., Sanguankiat, S., Pubampen, S., Praevanit, R., Mongkhonmu, S., and Nawa, Y. (2010) *Haplorchis taichui* as a possible etiologic agent of irritable bowel syndrome-like symptoms. *Korean Journal of Parasitology* 48(3): 225-9.
- WHO. (1995) Control of foodborne trematode infections. *WHO Technical Report Series* 157.
- Wijit, A., Siri, N., and Suya, A. (2009) Monitoring of Helminthiasis Controlling Program and *Haplorchis taichui* infection in Bo Kluea District, Nan Province, Northern of Thailand. *Lanna Public Health Journal* 5(3): 318-329 (in Thai).
- Yamaguti, S. (1975) Asynoptical review of life histories of digenetic Trematodes of vertebrates, Keigaku Publishing, Kyoto, 590 pp.