

A New Species of *Aulacospira* from Thailand (Pulmonata: Stylommatophora: Pupillidae)

PONGRAT DUMRONGROJWATTANA¹ AND SOMSAK PANHA^{2*}

¹ Department of Biology, Faculty of Science, Burapha University, Chonburi, Thailand
² Mollusc Research Unit, Department of Biology, Faculty of Science, Chulalongkorn University, Phayathai Road, Bangkok 10330, THAILAND

ABSTRACT.—*Aulacospira khaopraturun* n. sp. is described from a limestone hill in Rayong Province, Thailand. It is the third member of *Aulacospira* recorded from Thailand. Approximately, the first two whorls are rounded, the preultimate and final whorls exhibit two spiral sulci that extend to the aperture. No apertural barriers were observed.

KEY WORDS: *Aulacospira khaopraturun*, Pupillidae, Pulmonata, Thailand

INTRODUCTION

Panha and Burch (2001) were the first to record *Aulacospira* from Thailand when they described two species from northern and eastern Thailand. *Aulacospira* exhibit short deflected tubas, generally with distinct apertural barriers. The protoconch of *A. lampangensis* is sculptured with granulose wrinkles, which terminate abruptly where the protoconch ends and the teleconch begins. The new species was collected from Khao Pratun, Khao Chamao sub-District, Rayong Province, Thailand (Fig. 1). The lack of an apertural barrier is shared with three previously described Phillipine species (Möllendorff, 1887, 1888; Quadras and Möllendorff, 1894).

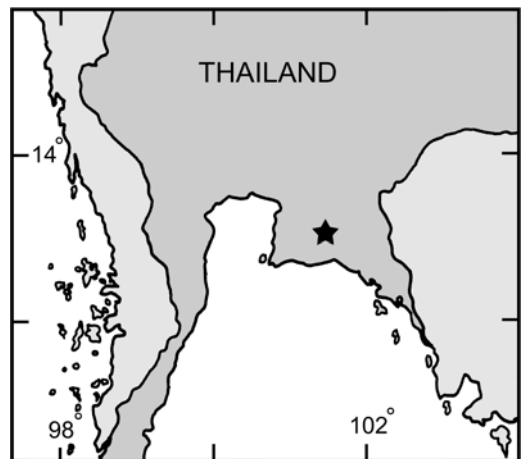


FIGURE 1. Map showing location of type locality, Khao Pratun, Rayong Province (star).

*Corresponding author:
Tel: (662) 218-5273
Fax: (662) 218-5273
E-mail: somsakp@sc.chula.ac.th

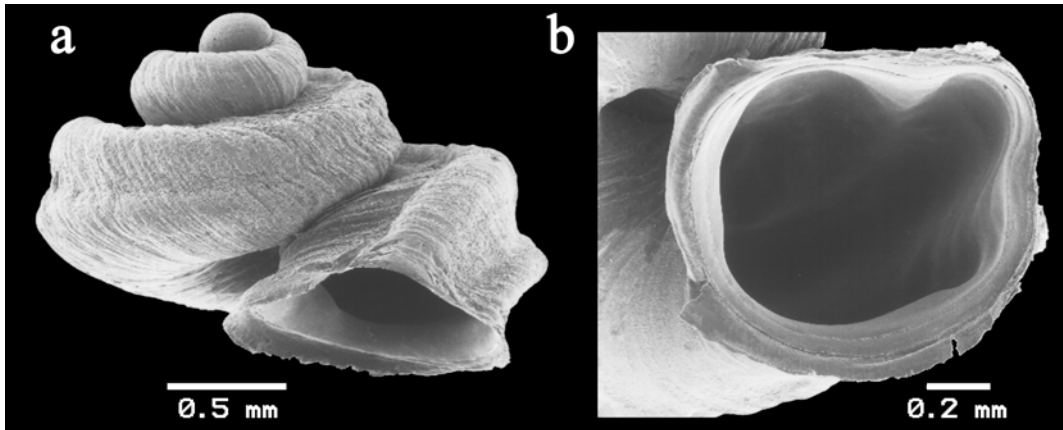


FIGURE 2. *Aulacospira khaopratur* n. sp. Holotype: (a) apertural view; (b) shell aperture.

Aulacospira khaopratur n. sp.

Fig. 2a, b

Description of Holotype- Shell minute, brownish, depressed, 1.6 mm high, 2.0 mm wide. Approximately 3 whorls with almost no trumpet-shaped aperture, normally a common feature of the genus. The smooth protoconch is terminated by the radial sulci of the teleoconch. Almost the first two whorls are rounded; the penultimate whorl and last whorl exhibit two distinct spiral sulci that are continuous with the aperture. No apertural barriers were observed.

Type Locality- Thailand, Khao Pratun, an isolated limestone hill of Rayong Province at 13° 07' 18" N 101° 36' 03" E.

Etymology- The specific epithet *khaopratur* is from the locality of the new species.

Type Material- The holotype (CUMZ, IDi 093) is deposited in the Chulalongkorn University Zoological Museum; five shell paratypes are deposited in the Museum of Zoology, Burapha University, Chonburi. Specimens presented by P. Dumrongrojwattana.

Geographic Distribution and Habitat- *Aulacospira khaopratur* is known only from Khao Pratun a limestone hill at Khao Chamao sub-District, Rayong Province. *Diplommatina crispata khaochamaoensis* (Panha, Kanchanasaka & Burch, 1997) was also found in this habitat.

Diagnosis- The two spiral sulci on the penultimate whorl and last whorl, and the lack of apertural barriers are the dominant characters for the new species.

Remarks- *Aulacospira khaopratur* n. sp. is superficially similar to *Aulacospira hololoma* Möllendorff, 1888 which is found in Cebu, Philippines, but the new species differs in possessing a low spire and two distinct spiral sulci on the penultimate whorl and last whorl.

ACKNOWLEDGEMENTS

This research was supported by part of a grant from the Biodiversity Research and Training Program (BRT 139035) to S. Panha and Development Grant from the Faculty of Science, Burapha University to P. Dumrongrojwattana.

LITERATURE CITED

- Möllendorff, O.F. von. 1887. Von den Philippinen. II. Die Insel Cebu. Jahrbücher der deutschen Malakozoologischen Gesellschaft 14: 235-283.
- Möllendorff, O.F. von. 1888. Von den Philippinen. V. Jahrbücher der deutschen Malakozoologischen Gesellschaft 20: 65-90.
- Panha, S. and Burch, J.B. 2001. The pupillid genus *Aulacospira* in Thailand (Pulmonata: Stylommatophora). Walkerana 12: 65-76.

Received: 17 January 2005

Accepted: 18 April 2005